

An aerial photograph of a landscape, likely a river valley, with a network of green and blue lines overlaid on it. The green lines represent a network of green infrastructure, possibly parks or greenways, while the blue lines represent water bodies or drainage systems. The background is a mix of green, blue, and brownish-yellow tones, suggesting a natural, somewhat urbanized environment.

Seeing Trees Differently: Strategies, Tools, & Technology for Greening Infrastructure

MID-AMERICA REGIONAL COUNCIL

Tom Jacobs

MARC
MID-AMERICA REGIONAL COUNCIL

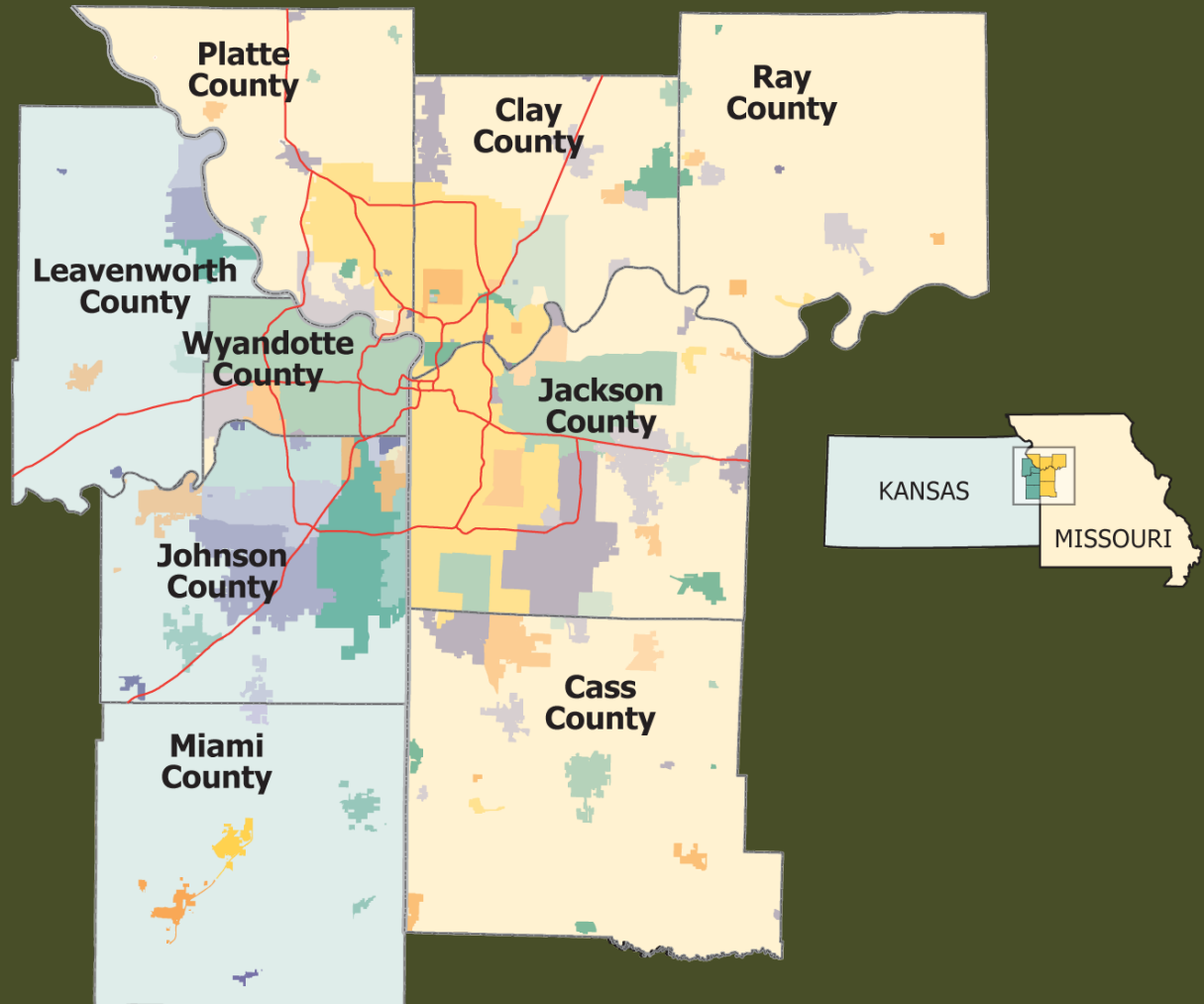
Vision for the Kansas City Region

Greater Kansas City is a sustainable region that increases the vitality of our society, economy, and environment for current residents and future generations.

- Adopted by MARC Board, January 2009

The Kansas City Region

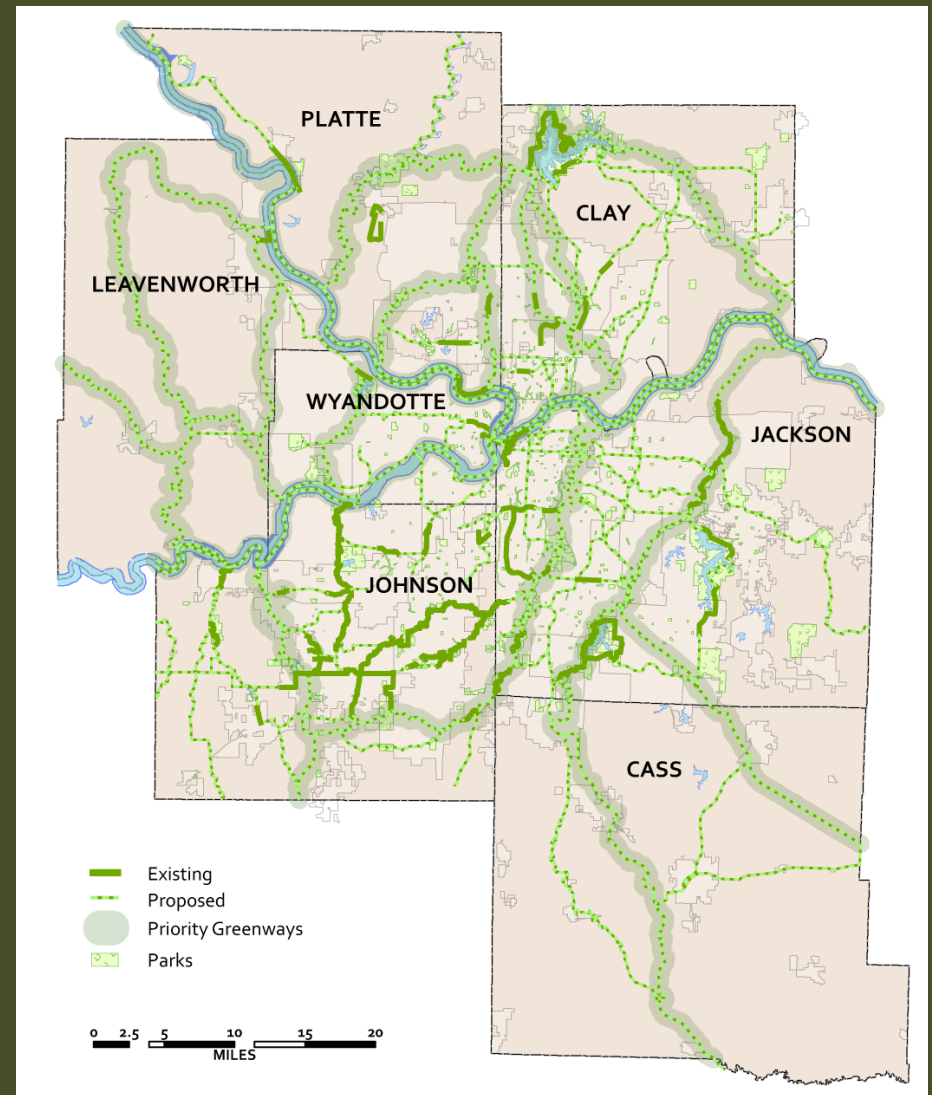
- 2 states
- 9 counties
- 119 cities
- 2.1 million people
- 4,400 square miles





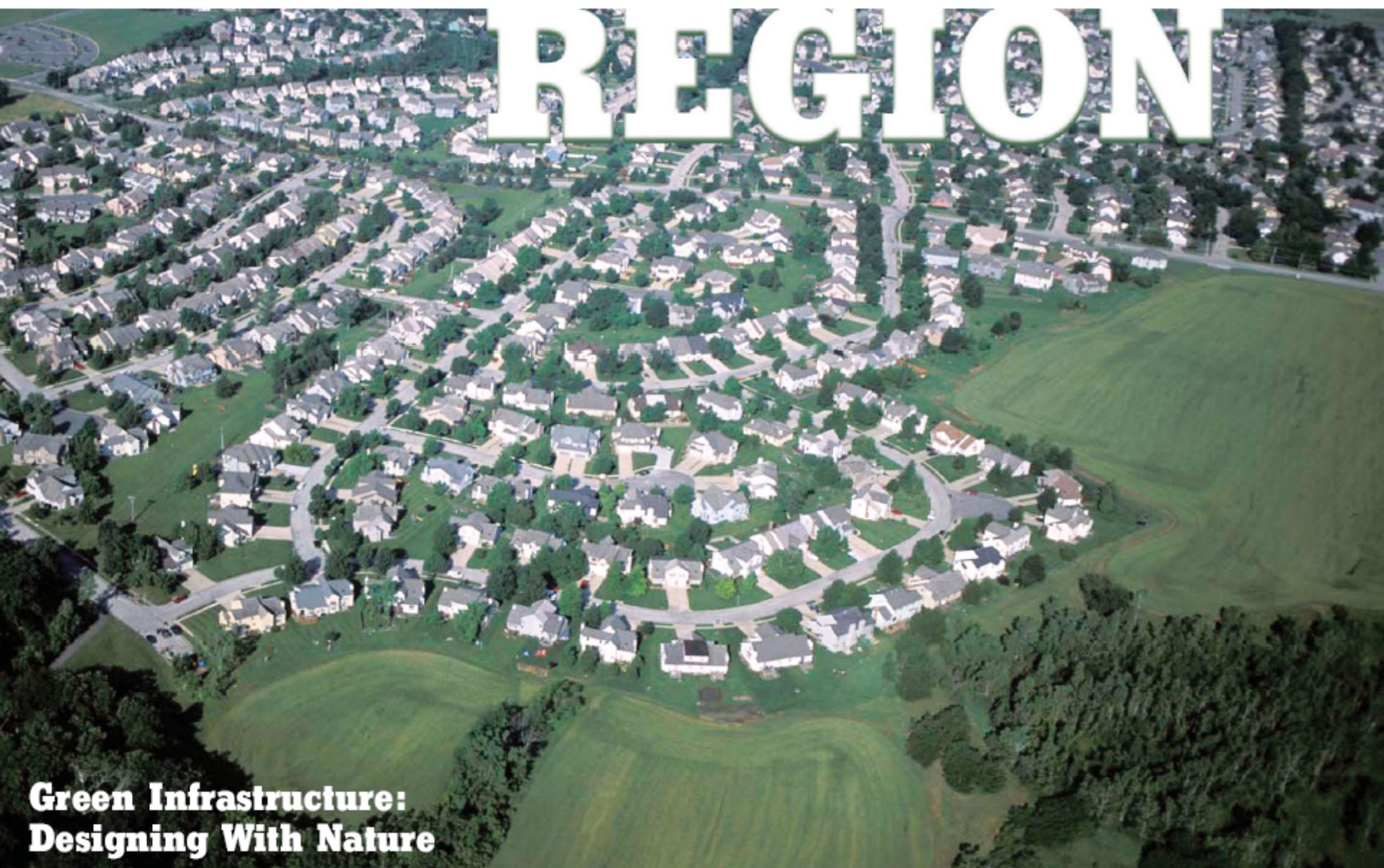
Proactive Conservation

MetroGreen[®] trails
and natural resource
protection plan



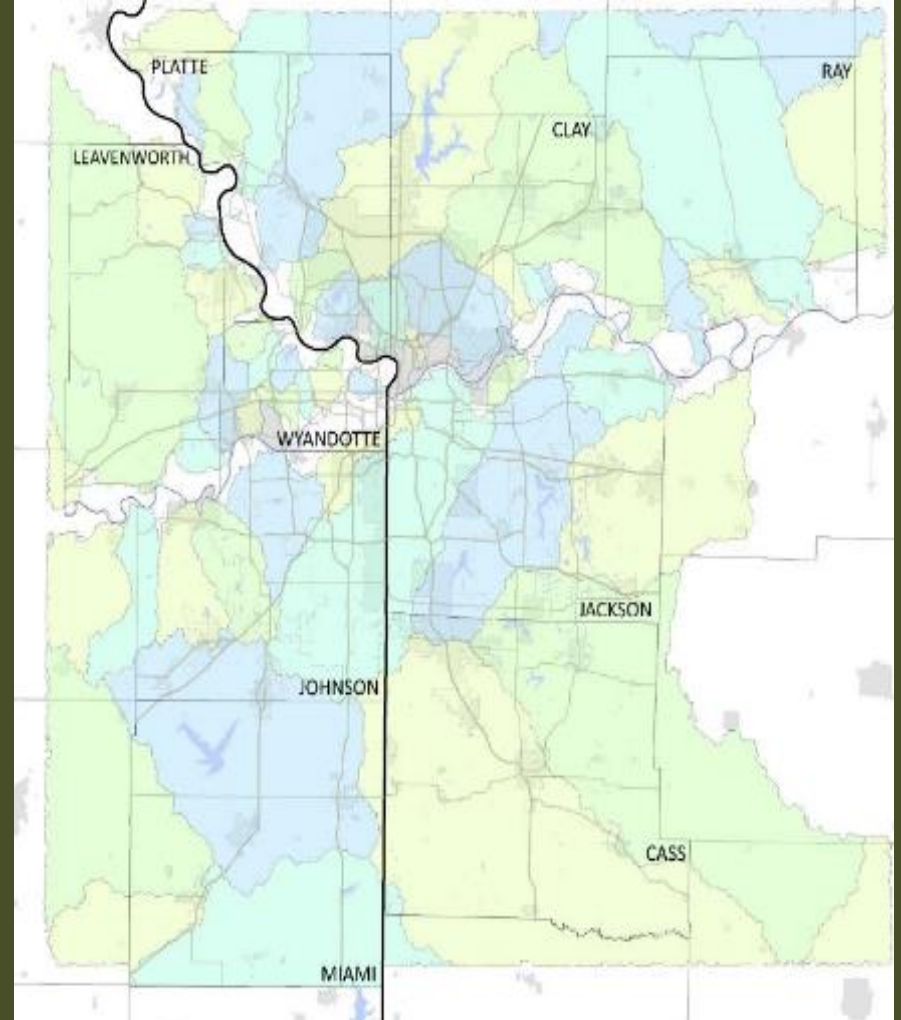
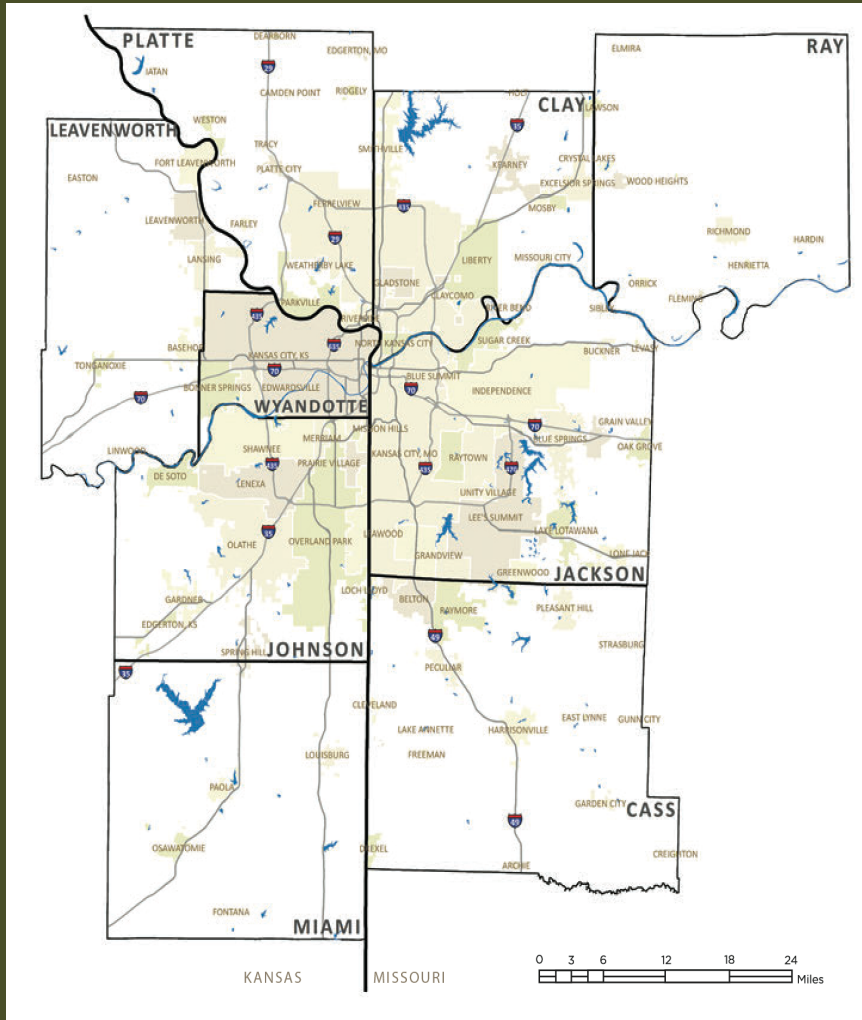
KANSAS CITY

REGION

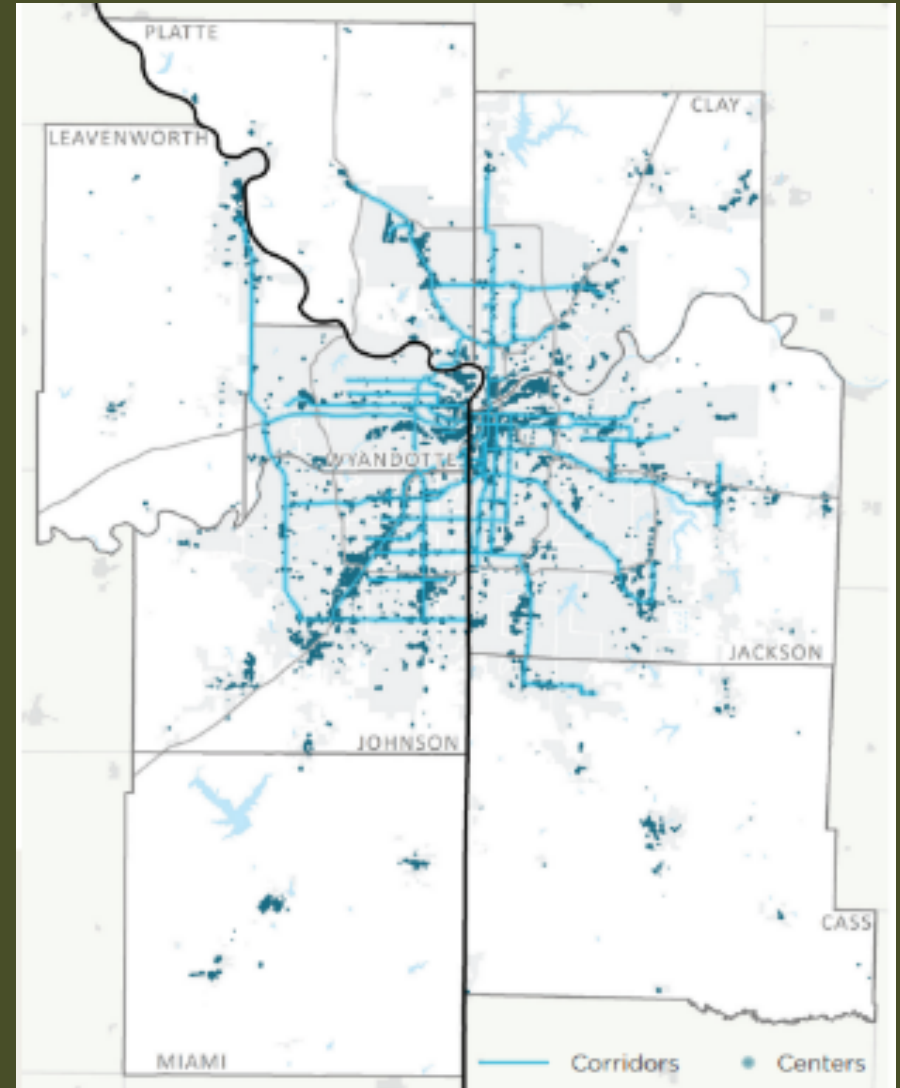
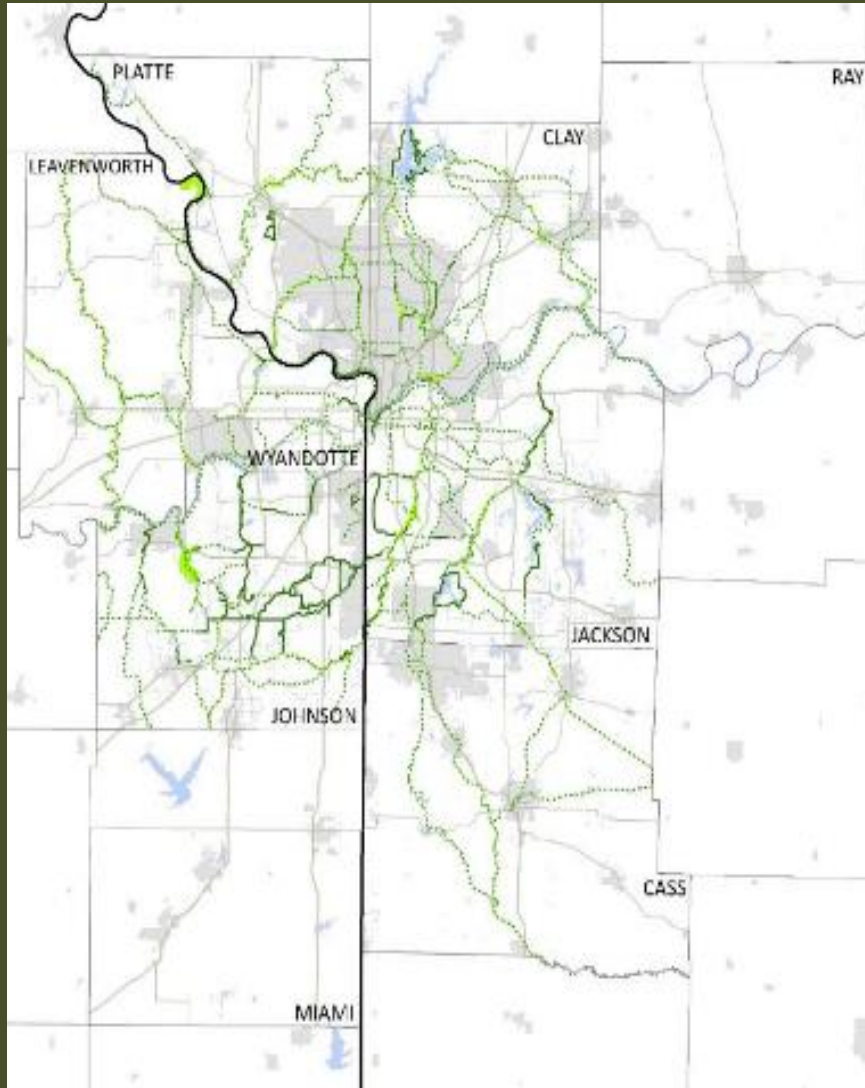


**Green Infrastructure:
Designing With Nature**

The Regional Landscape



Regional Land Use Direction



A man with a beard, wearing a white shirt and a blue and green striped tie, is pointing at a flipchart. He is standing in a meeting room with other people in the background. The room has blue chairs and a whiteboard.

Intersects other regional initiatives

Climate resilience

Stormwater management

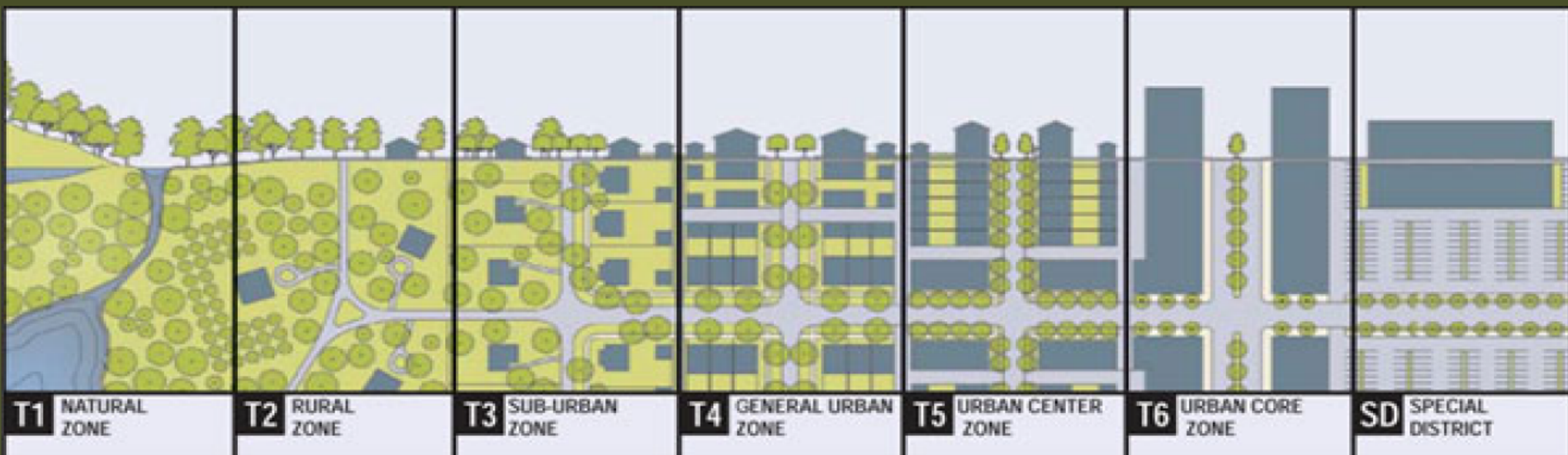
Clean Air Action Plan

Energy efficiency & conservation

Natural hazard mitigation

Public health

Transportation





Stormwater Planning



The cover of the "BMP Manual of Best Management Practices For Stormwater Quality" features a collage of images: a river, a stormwater treatment facility, a person planting a tree, and a family of ducks. The title "BMP" is in large blue letters, and "Manual of Best Management Practices For Stormwater Quality" is in white on a dark blue background. The date "o c t o b e r 2 0 1 2" is displayed in a white box. Logos for APWA Kansas City Metro Chapter, a stylized person icon, and MARC Mid-America Regional Council are at the bottom.

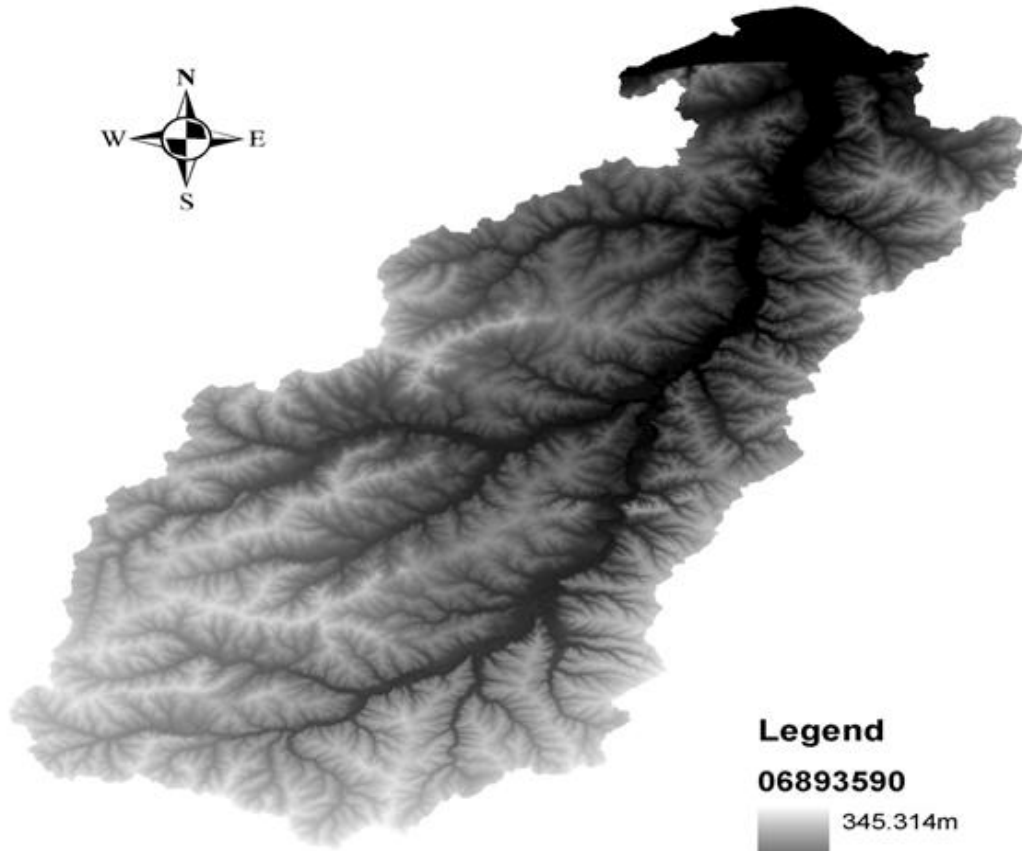
BMP
Manual of Best Management Practices
For Stormwater Quality

o c t o b e r
2 0 1 2

AMERICAN PUBLIC WORKS ASSOCIATION
APWA
Kansas City Metro Chapter

Clean Water. Healthy Life.
Regional Water Quality Education Program

MARC
Mid-America Regional Council



0 2 4 8 12 16 Kilometers

Legend
06893590
345.314m
219.597m

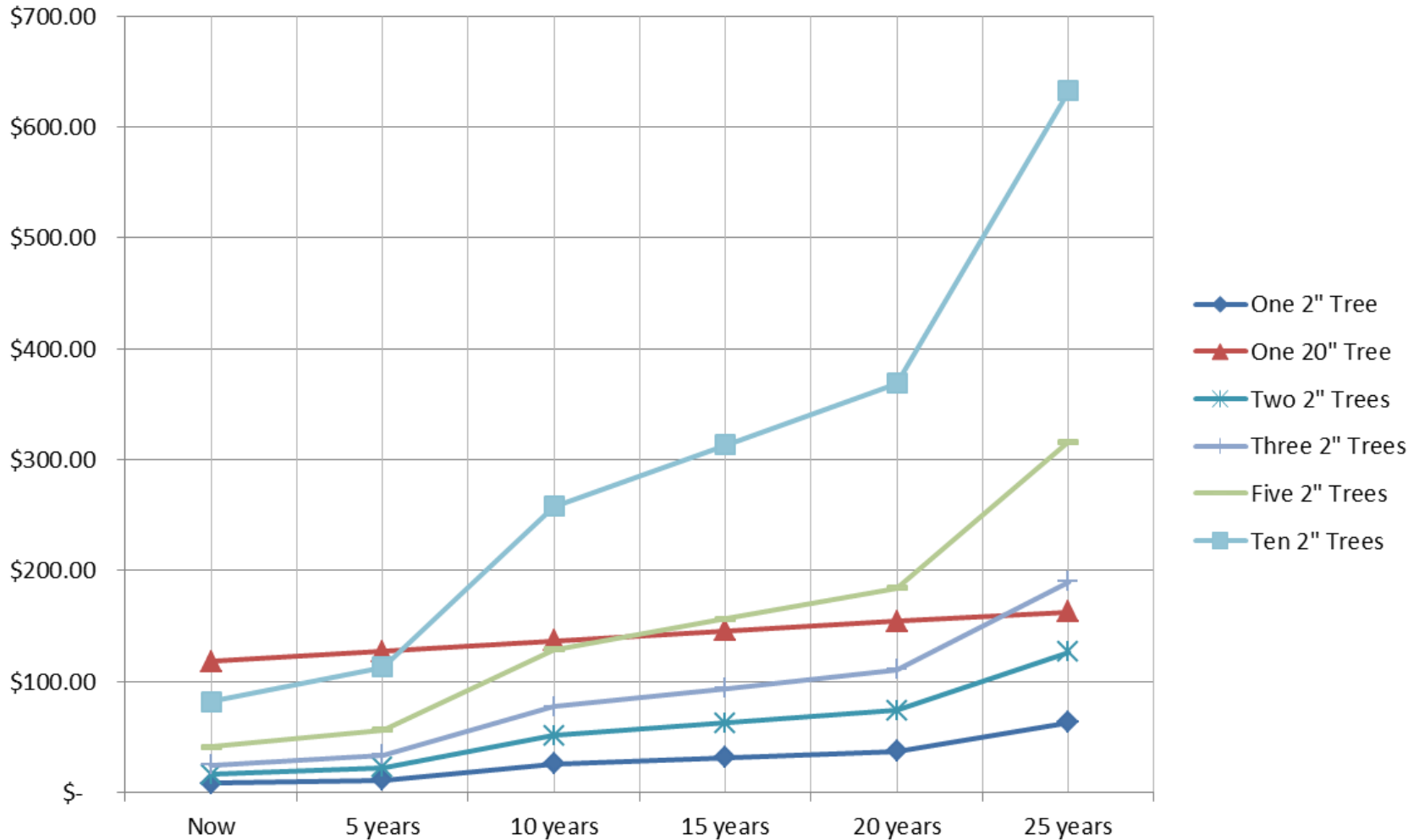


i-tree

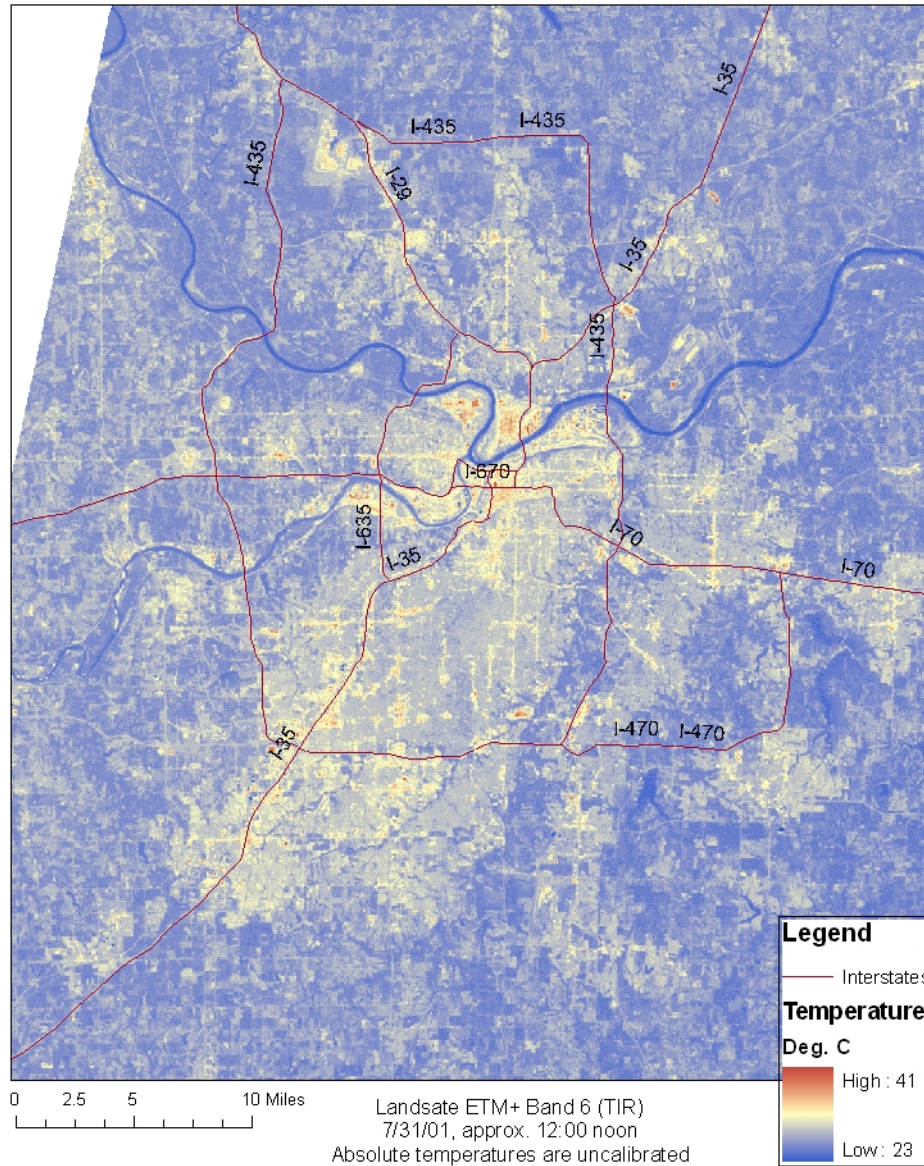
A regional forest assessment

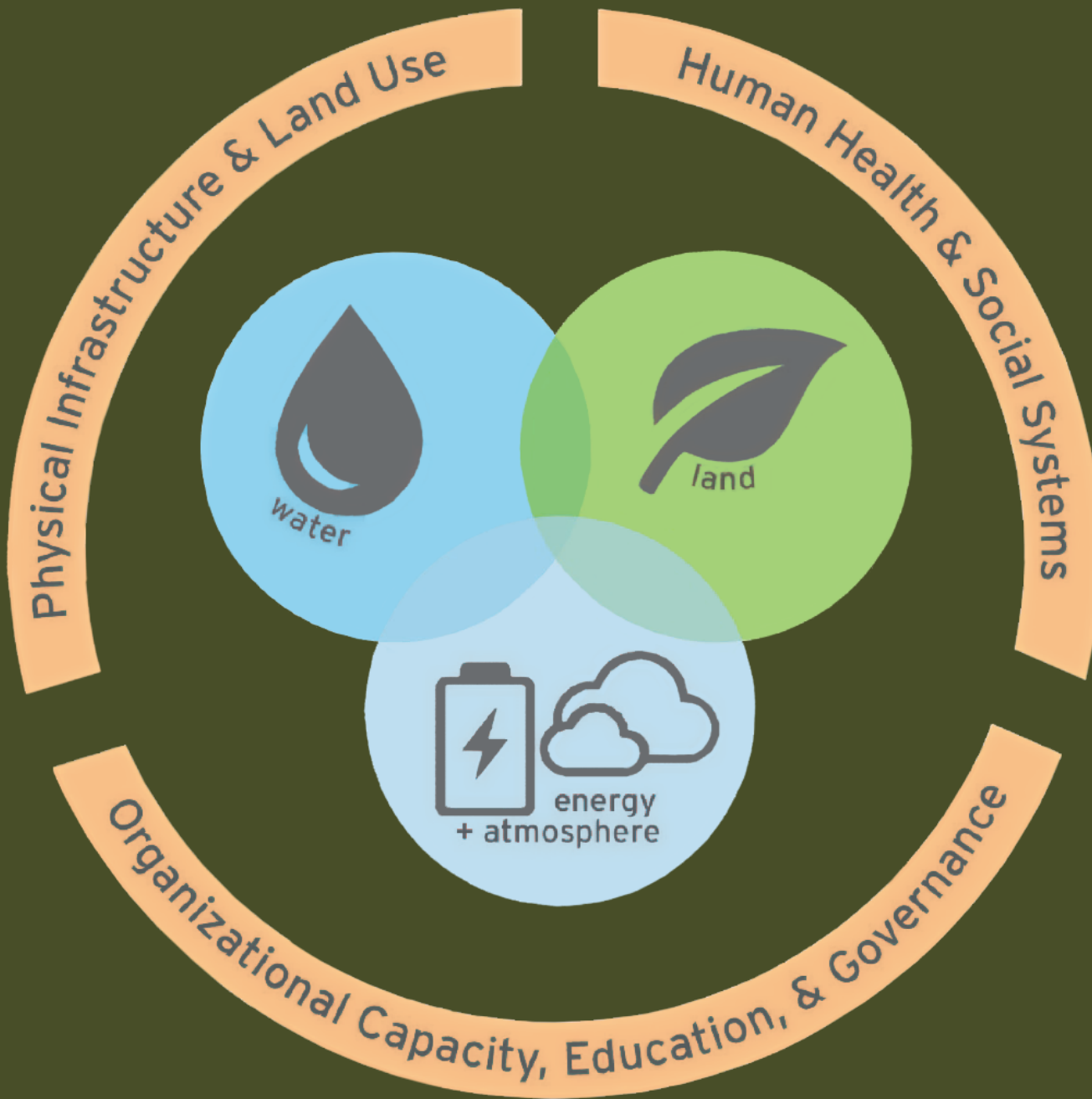


Ecosystem Service Benefits



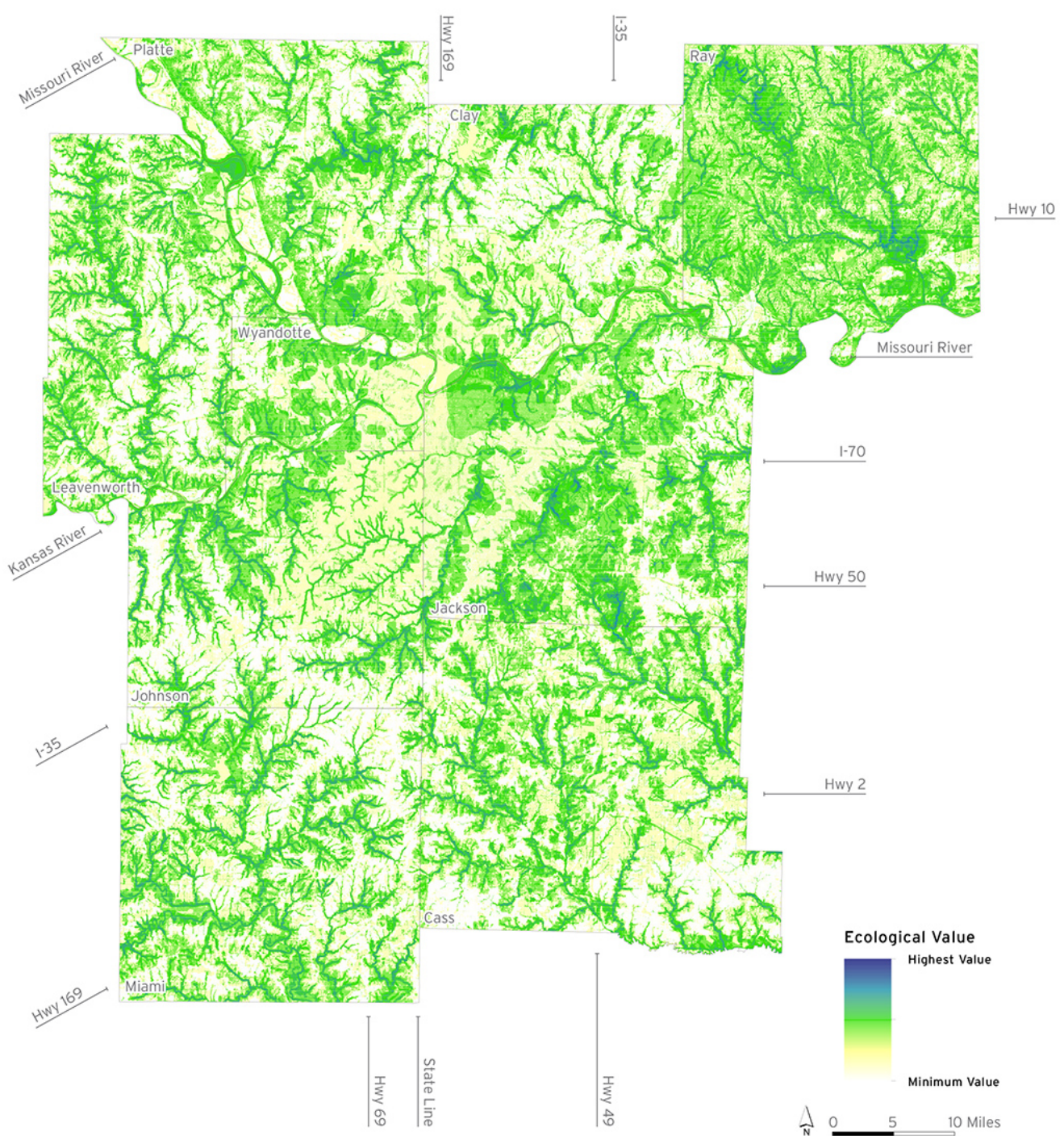
Land Surface Temperature for Kansas City Metro Area





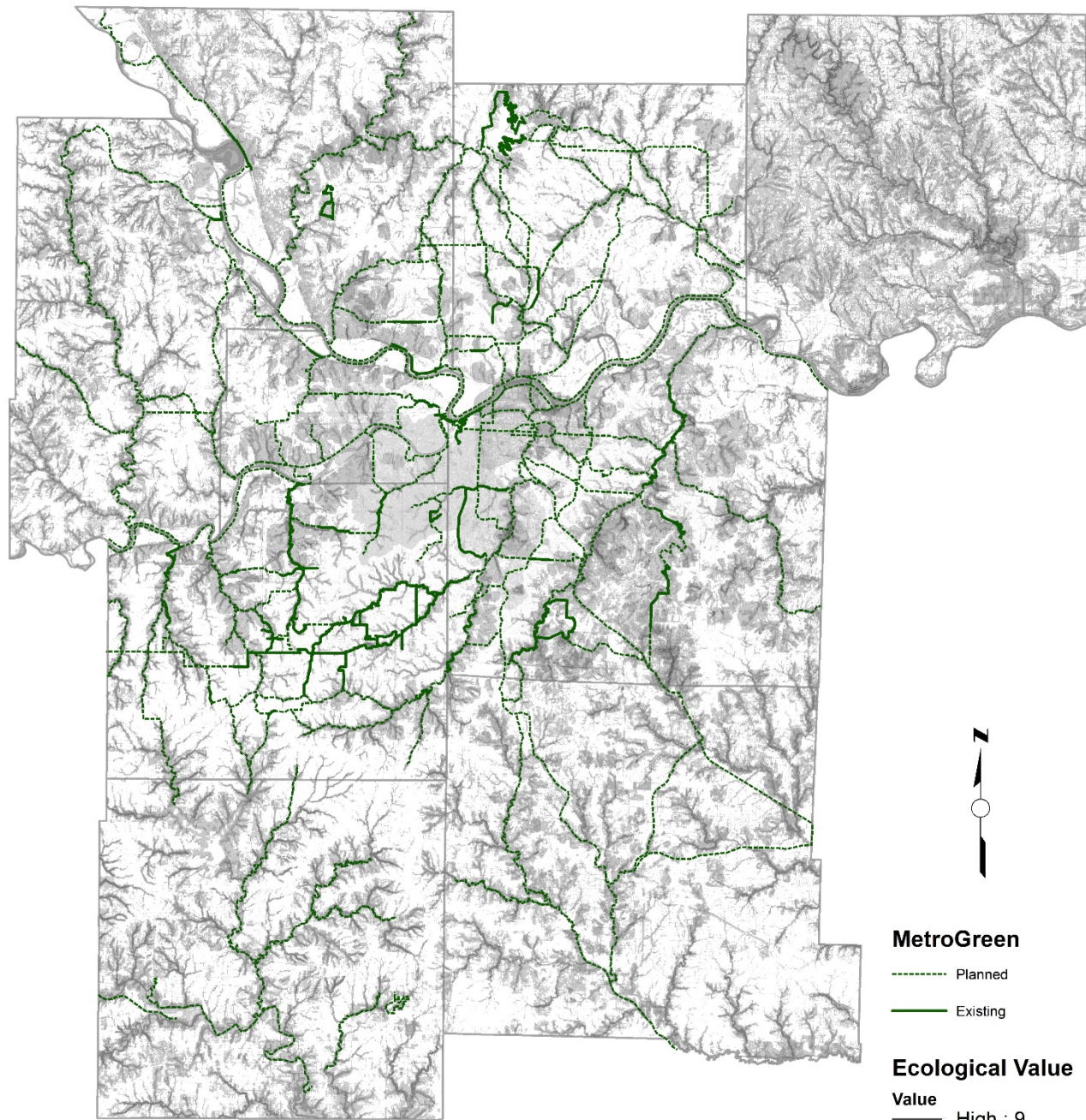
ATLAS

Ecological Value



ATLAS

Metro
Green



MetroGreen

- Planned
- Existing

Ecological Value

- Value
- High : 9
 - Low : 2

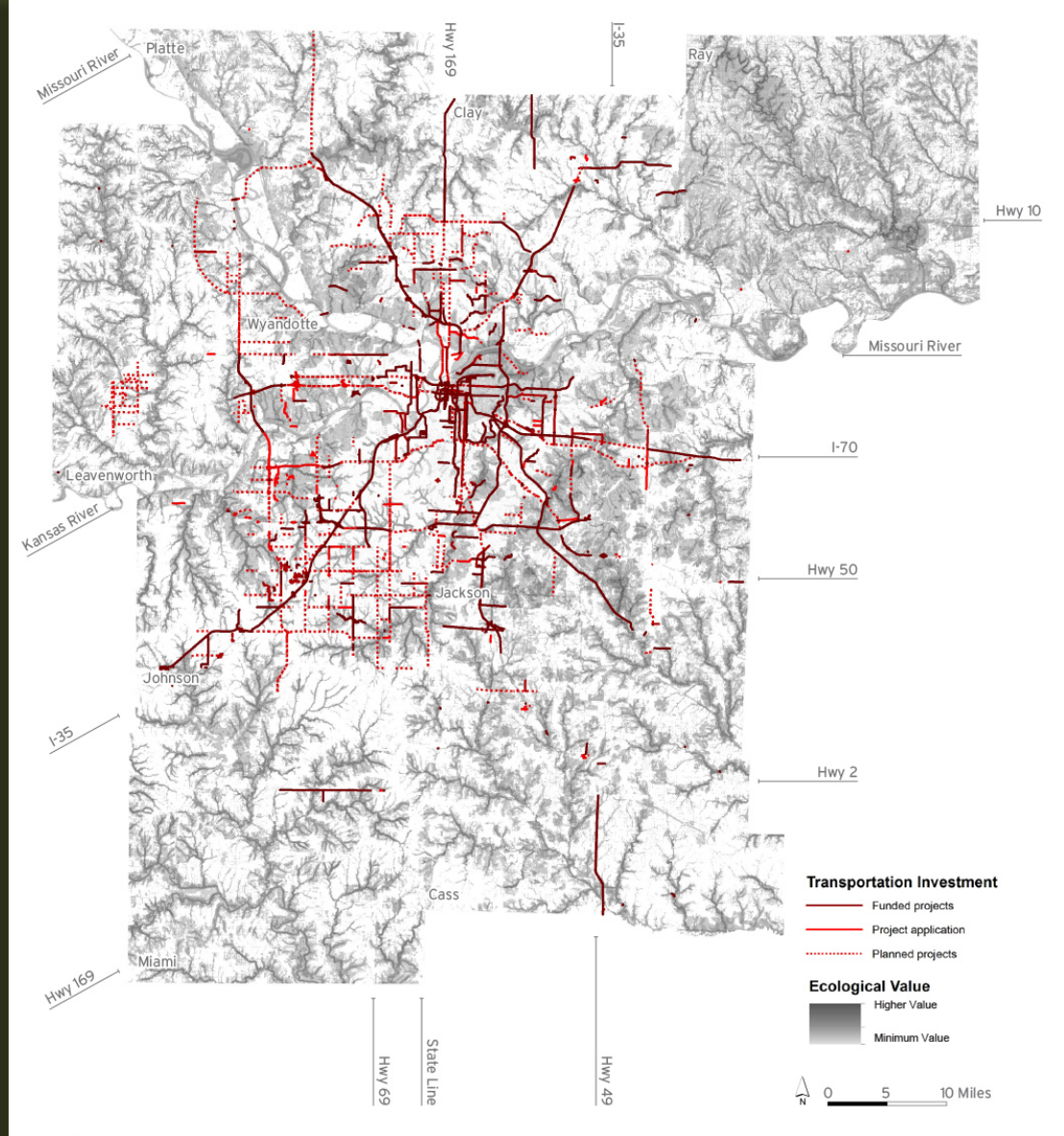




An Ecosystem Approach
to Developing
Infrastructure Projects

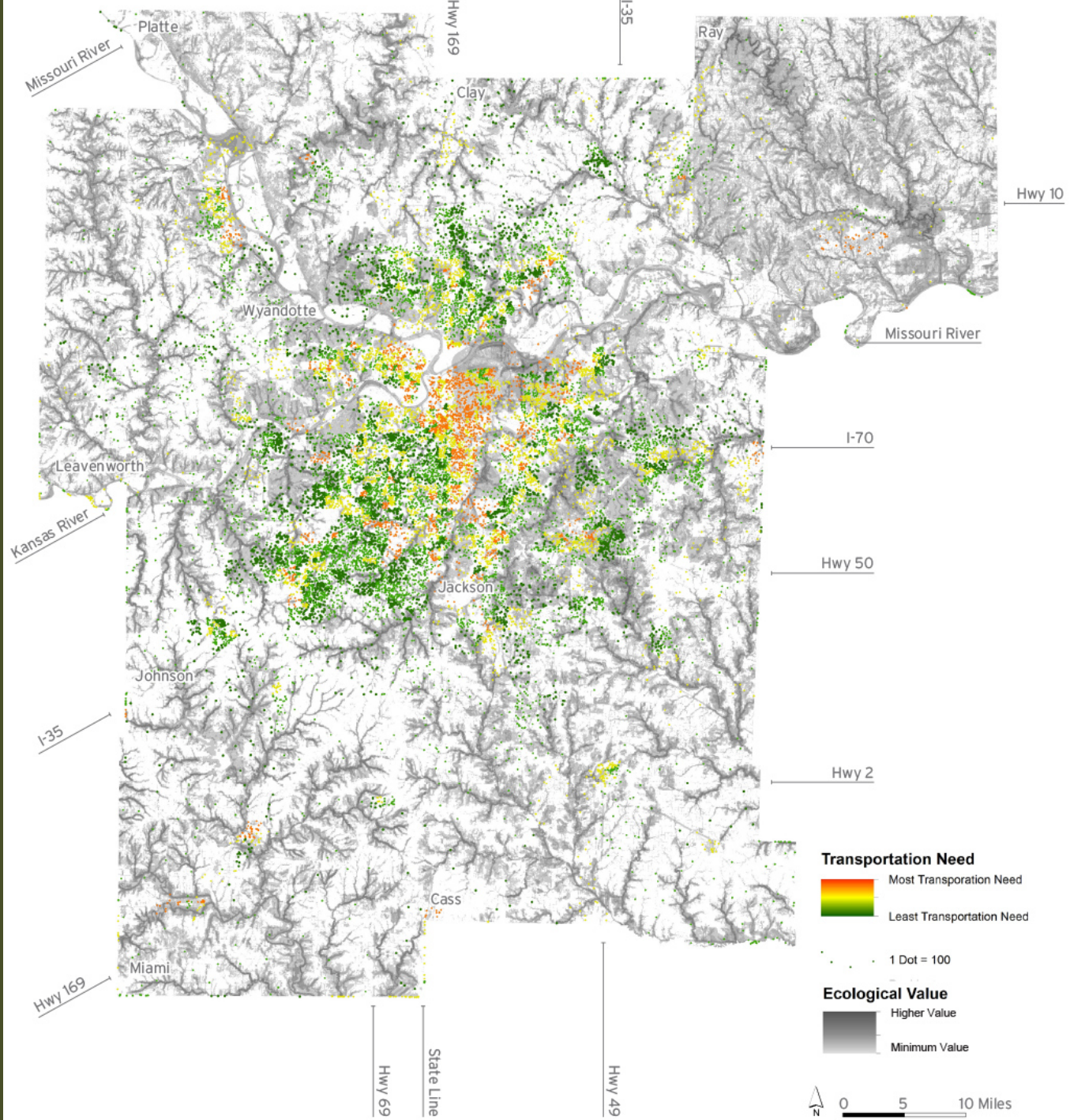


Eco-Logical

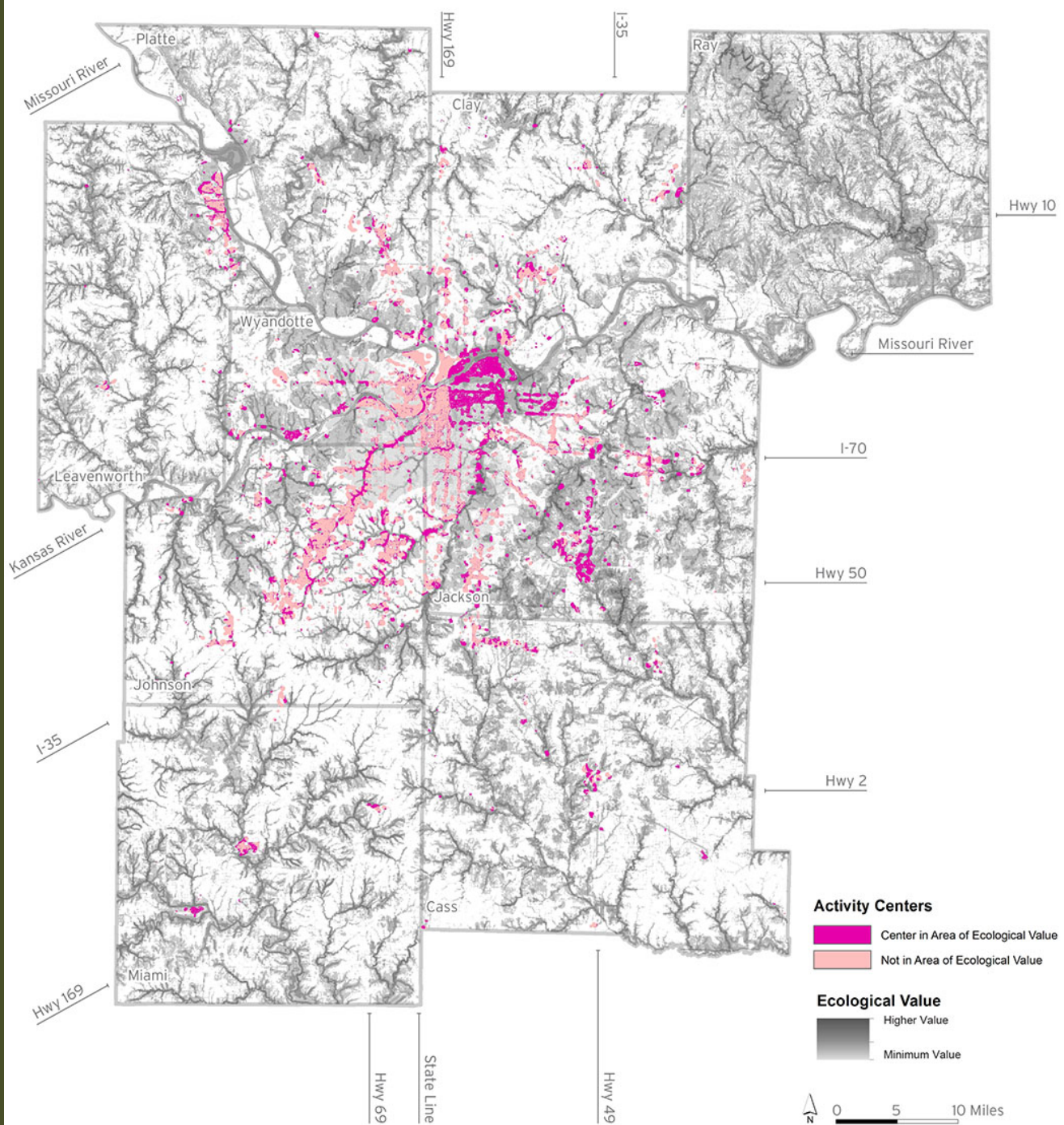


ATLAS

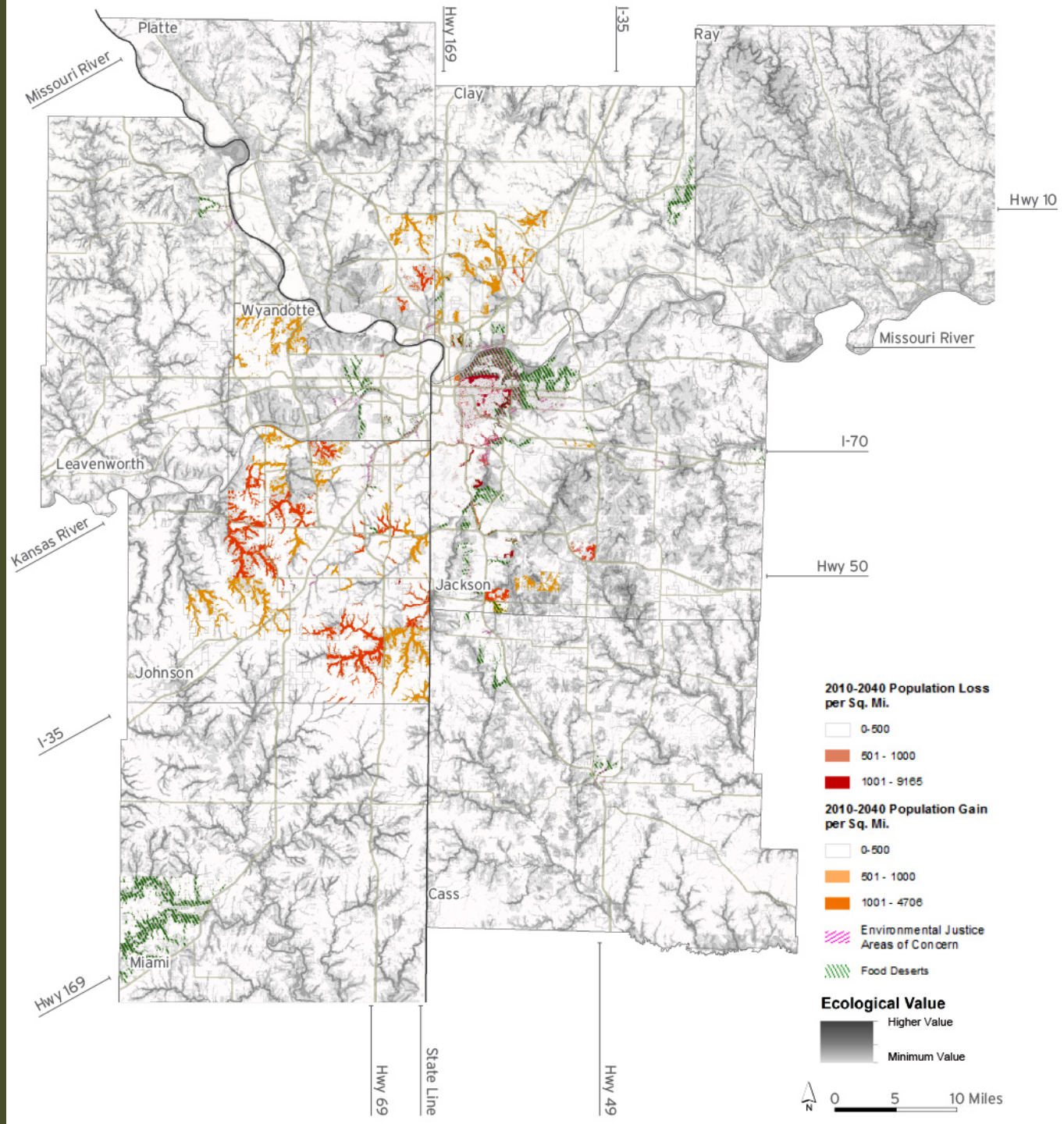
Transportation Equity



Activity Centers

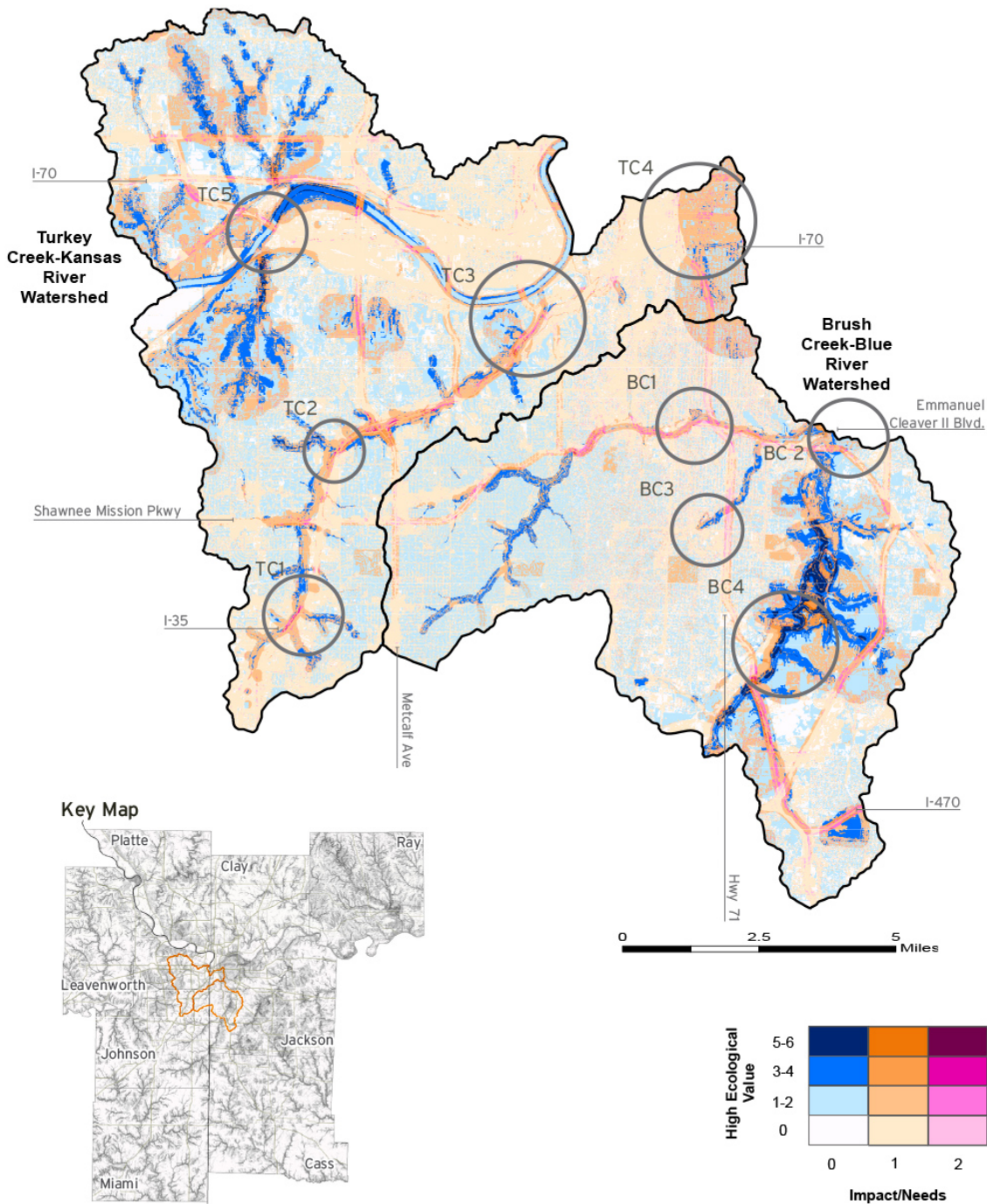


Social Conditions



PLAYBOOK

Ecological Value with Impact & Needs



PLAYBOOK - Policy and Planning

Metropolitan Transportation Plan

- Planning goals
- Decision criteria
- Advance Mitigation

Selected Implementation Opportunities

- Complete and green streets
- Planning Sustainable Places
- One Water
- KC Native Plant Initiative



Questions?

Tom Jacobs

Mid-America Regional Council

tjacobs@marc.org

816-701-8352